

PRODUCTION SPONSORS OF THEATRE RALEIGH

COURTYARD  
Marriott

Residence  
Inn  
Marriott

FAIRFIELD  
INN & SUITES  
Marriott

TOWNEPLACE  
SUITES  
Marriott

FOR MEETINGS, EVENTS AND GROUP BLOCKS 919-279-3039

Residence Inn Raleigh Downtown  
Residence Inn Raleigh Midtown  
Residence Inn Raleigh Crabtree

Courtyard Raleigh Crabtree  
Fairfield Inn & Suites Raleigh Crabtree  
TownePlace Suites Cary Weston Pkwy

Residence  
Inn  
Marriott

RALEIGH DOWNTOWN



WALK TO THEATRE, DINING AND ENTERTAINMENT

2018 SUMMER SERIES

SUMMITHOSPITALITY.COM

# BUD, NOT BUDDY

BY REGINALD ANDRÉ JACKSON


ADAPTED FROM THE NOVEL BY CHRISTOPHER PAUL CURTIS

## MARCH 13-29

KENNEDY THEATRE AT THE DUKE ENERGY CENTER  
FOR THE PERFORMING ARTS

DIRECTED BY  
MONÈ  
NOELLE  
MARSHALL

LIVE MUSIC BY  
TRIANGLE  
YOUTH JAZZ  
ENSEMBLE

 Philharmonic Association  
Triangle Youth Jazz Ensemble

Produced by special arrangement  
with THE DRAMATIC  
PUBLISHING COMPANY  
of Woodstock, Illinois

Duke Energy Center  
for the Performing Arts

**TR**  
THEATRE  
RALEIGH  
2019-2020  
**FAMILY**  
SERIES





WESTON BANKS  
WEALTH PARTNERS

**IF YOU'RE THE LEAD  
OF YOUR OWN LIFE,  
WHO'S YOUR  
UNDERSTUDY?**

**...THEY'VE GOT SOME  
BIG SHOES TO FILL.**

**we're here to help create a financial plan that lets the next generation  
walk out your legacy - so that the show can always go on....**

Weston Banks Wealth Partners: Forward-Thinking Investing for Life and Legacy  
visit [www.westonbanks.com](http://www.westonbanks.com) or call us at (919) 783-8500 for more information  
Jason Steele, President



Securities and advisory services offered through Prospera Financial Services, Inc., Member FINRA/SIPC

**TR**  
THEATRE  
RALEIGH

2019-2020  
**FAMILY**  
SERIES

Dear patrons,

When was the last time you felt wonder? Real wonder? When did your imagination and curiosity make the unknown blossom? I hope it was recent. And if it wasn't, I hope you experience that today.

*Bud, Not Buddy* is a story about the power of imagination when the world is hard. At least, that's what struck me when I read the book. Bud's moral code, larger-than-life dreams and engaging storytelling drew me in. Here we are, over 20 years later, and that remains true. It is the perfect story for the child in all of us; a story where a little boy lets his dreams and wonder guide him into a wild adventure and unimaginable life.

Though this play is not biographical, it references true impacts of the Great Depression such as the hundreds of thousands of people living in Hoovervilles across the nation, thousands of people riding the rails looking for opportunities out West and the luxury that many artists lived in because it was art that kept spirits high in otherwise hard times. There are themes of race, class, mental health and family that can open the door to have important conversations with the ones you love.

Most importantly, *Bud, Not Buddy* reminds us of the power of our steadfast belief. Even a tiny seed of belief can grow into a mighty maple of possibility. And that's a message we all need right now.

Woop Zoop Sloop,  
Monèt Noelle Marshall

Special Thanks: I would like to thank the cast and designers for their hard work and heart, my parents Robin and Bryan who encouraged my love of learning and leadership and my Nanny, Evelyn Marie Laisure, the librarian, who taught me so much more than any book ever could.

# BUD, NOT BUDDY

BY  
Reginald André Jackson

ADAPTED FROM THE NOVEL BY  
Christopher Paul Curtis

WITH LIVE MUSIC BY  
Triangle Youth  
Jazz Ensemble

Directed by MONÈ NOELLE MARSHALL

Musical Direction by GREGG GELB

## STARRING

Ben Apple  
Maria Barber  
Trevon Carr  
JaJuan Cofield  
Shia Raine Edwards  
Jefferson Gichuru  
Sai Graham  
Quasheem D. Herring  
Tyrone Kiaku  
Aya Wallace  
Juan Wood II

**Scenic and Prop Design:** Elizabeth Newton

**Lighting Design:** Kaitlin Gill Rider

**Costume Design:** Pamela A. Bond

**Sound Design:** Eric Alexander Collins

**Stage Manager:** LaNeisha Farrar

Produced by special arrangement with  
THE DRAMATIC PUBLISHING COMPANY of  
Woodstock, Illinois

The 2019-2020 Family Series is funded in part by: Debbie  
and Mark Hammersla, Duke Raleigh Hospital, Phyllis and  
Marty Demko, and Donna and Richard Falvo

First commissioned and developed in the 'Book-It Style™' by Book-It Repertory  
Theatre, founded in 1990, Seattle, Washington, [www.book-it.org](http://www.book-it.org). Transforming  
great literature into great theatre through simple and sensitive production and  
inspiring audiences to read.

## COMPANY



**BEN APPLE** (*Jake/Dirty Deed*)  
With Triad Stage- *Brother  
Wolf, Snow Queen, A  
Christmas Carol*. With Theatre  
Raleigh - *The Adventures of  
Peter Rabbit and his Friends*.  
With Burning Coal- *A Number,  
Far Away, King Charles III,  
Peter Pan and Wendy, The  
Greeks*. Other- *Bad Jews* (Big Wig Productions),  
*Recent Tragic Events* (Interrobang Theater Chicago),  
*The Actor and the Assassin* (HART). Education-BFA  
Acting, UNC-Greensboro 2014.



**MARIA BARBER** (*Mrs.  
Thomas/Deza's Mom/Mrs.  
Amos*) This is Maria's 1st show  
at Theatre Raleigh, but she  
has performed in numerous  
theater productions. She  
portrayed Sofia in *The Color  
Purple* with the Justice  
Theater Project. Additional

favorite past credits include *Black Nativity, Porgy &  
Bess, Bob Marley's 3 Little Birds* and *A Motown  
Christmas*. When she is not performing on stage,  
Maria enjoys being an admin for the NC Women's  
Flag Football League and volunteering as a House  
Manager at Raleigh Little Theater and Pure Life  
Theatre. Special thanks and immeasurable love to  
the village that supports her theater chick  
shenanigans. She promises to leave space in the  
limo just for them!



**TREVON CARR** (*Todd/"Steady  
Eddie"*) is excited to be  
making his Theater Raleigh  
debut . Trevon most recently  
played the "Know it all " kid  
on *The Polar Express* in  
Florida, and I'm also in *Oliver!*  
at Temple Theater! He is

excited to continue his theatre career!



**JAJUAN COFIELD** (*"Doug the  
Thug"*) is a native of Tarboro,  
North Carolina. A life-long  
performer, this will be his  
second theatrical  
performance with Theatre  
Raleigh. Most recently, he  
was a part of Theatre  
Raleigh's presentation of *The*

*Scottsboro Boys*, and after that Pure Life Theatre's  
presentation of *A Motown Christmas* and *Loving*.  
When he's not performing, JaJuan is also a sound  
designer for multiple local theaters. He is grateful  
to be surrounded by such amazing talent and  
honored to join the cast of *Bud, Not Buddy*.

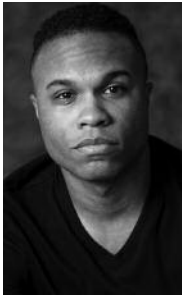


**SHIA RAINE EDWARDS**  
(*Deza Malone/Jerry/Young  
Momma*) is excited to be  
making her Theatre Raleigh  
debut in the Family Series  
show *Bud, Not Buddy*. Her love  
for dancing, singing and  
acting dates back to the age  
of three. She currently trains

with North Carolina Dance Institute, LA Dance and  
Five Fifteen's Dance. Shia's previous performances  
include the dwarf Shy in the Lythgoe Family's Panto  
presentation of *Snow White Christmas*. Performing  
is not her only love. When Shia is not on stage, she  
can be found researching science projects and  
activities and spending time with her siblings. Shia  
attends Brier Creek Elementary School and is  
proudly represented by KUTalent Agency.



**JEFFERSON GICHURU**  
(*Young Bud*) is 14 years old.  
He was born in Raleigh, North  
Carolina. He has a passion for  
acting and wants to pursue it  
as a career. He plays the  
trombone and tuba. He is also  
an active Soccer player and  
loves swimming and  
rollerblading.



**SAI GRAHAM** (*Bugs/"Doo-Doo Bug"*) is happy to be back on the Theatre Raleigh stage! Regional Credits: *In The Heights* (NCT), *West Side Story* (NCT), *Mamma Mia!* (NCT), *The Scottsboro Boys* (Willie Roberson, Theatre Raleigh), *A Motown Christmas* (Li V

Mahob Productions). Other favorite credits: *The Wild Party* (Mr. Black, WPU), *Kiss Me, Kate* (Paul, WPU), *Noises Off* (Selsdon, WPU). Upcoming: *Mamma Mia!* as Pepper at Temple Theatre and *Peace of Clay* at Theatre Raleigh. IG: @sai\_scraper.



**QUASHEEM D. HERRING** (*Herman Calloway*) is an 8-year Air Force Veteran that has always had a passion for acting. He truly feels that acting is one of the quickest routes to reach the masses with any message that he pride himself on delivering,

by being versatile and believing in execution and consistency. Quasheem has worked on multiple films such as *Suicide Squad 2* directed by James Gunn, *Tomorrow War* directed by Chris McKay, and *Negative Exposure* directed by Toni Tite and TV shows such as *ATL Homicide*, *Fatal Attraction* and *The Walking Dead*. Contact Info: IG: @quasheemdherrin Email: qdherring@gmail.com



**TYRONE KIAKU** (*Deza's Dad/Mr. Jimmy*) is ecstatic to return to Theatre Raleigh in *Bud, Not Buddy*. Tyrone was recently seen in *Ragtime* - Harlem Ensemble/Coalhouse Understudy (Playmakers Repertory Company), *The Scottsboro Boys* - Olen

Montgomery (Theatre Raleigh), and *Kinky Boots* - Referee Angel (Hangar Theatre). Tyrone would like to thank his mom, siblings, family, and friends for

their continued support and encouragement to follow his dreams! Follow Tyrone on Instagram/Twitter @TyroneKiaku or at TyroneKiaku.com.



**AYA WALLACE** (*Momma*) is excited to perform on Theatre Raleigh's stage once again. Her first performance with TR was *The Lady* in *Scottsboro Boys*! Just some of her other roles include Felicia, *Memphis* (Raleigh

Little Theatre); Celie, *The Color Purple* (Justice Theatre Project); and Mildred Loving, *Loving* (Pure Life Theatre). She received her B.S in Kinesiology at Temple University and MA in Dance Education from NYU. She is forever grateful to family and friends who support her, especially her son. Jarius, remember that before I knew I was pregnant with you, God woke me up at 4am and told me to get up and write down, "What's inside of you will be great!" When I thought God was talking about my talents, God was talking about you! You are already great and will surpass what any of us could ever imagine!



**JUAN WOOD II** (*Adult Bud/Lefty Lewis*) is happy to be performing in his Theatre Raleigh debut! Theatre credits: *Dog Sees God*, *The Whipping Man*. IG: @Juanwood2nd.

## CREATIVE TEAM

**PAMELA A. BOND** (*Costume Designer*) is a native of Durham, North Carolina. She received a B.A. in Theatre, B.S. in Textiles & Apparel and a M.A. in Textiles & Apparel from North Carolina Central University. Mrs. Bond serves as costume designer for the Department of Theatre at North Carolina Central University. Pamela has acted and costumed

# BE BOLD

## BACHELOR OF ARTS IN THEATRE



Theatre comes to life at Barton College where bold thinkers form bold leaders. With Broadway and regional talent backing this program, the stars are the limit, and you will hit the ground running in your first year. Our B.A. in Theatre degree offers concentrations in performance, musical theatre, management, and design. Be Bold at Barton!

Scholarships Available

#BARTONBOLD  
1-800-345-4973 | barton.edu/theatre



/bartoncollege



Bold Thinkers. Bold Leaders.

**BARTON**  
COLLEGE

several productions in the Triangle area. She recently served as Artist In Residence at Hampton University in Hampton VA. Ms. Bond owns Pamela Bond Designs at Golden Belt Artist Studios in Durham, NC.

**ERIC ALEXANDER COLLINS** (*Sound Designer*) is excited to begin his tenth season designing for Theatre Raleigh! Three of his past designs for Theatre Raleigh have been awarded Best Sound Design by BroadwayWorld: *The Mystery of Edwin Drood* (2016), *Smokey Joe's Cafe* (2017), and *ONCE* (2018). Eric first designed for TR back in 2011, including the shows *The Marvelous Wonderettes* and *Violet*. Recent credits include: North Carolina Theatre: *Kinky Boots*, *Mama Mia!*, *A Night With Janis Joplin* and *Gypsy*. Theatre Raleigh: *The Scottsboro Boys*, *The Bridges of Madison County*, *Junk*, *The Secret Garden*, *Ariana DeBose (in Concert)*, Playmaker's Rep. Co. (U.N.C.): *Ragtime*, *She Loves Me*, *The Crucible*, *Peter and the Starcatcher*. Carolina

Ballet: *MacBeth* (2016 world premier ballet), Lynne Taylor-Corbett's *Dracula* and *The Little Mermaid* (both world premier ballets). North Carolina Symphony: *The Music Man*, *Idina Menzel (in concert)*, *Natalie Merchant (in concert)*. University Theatre (N.C.S.U.): *Our Town*, *The 39 Steps*. Theatre In The Park: *Godspell*.

**LANEISHA FARRAR** (*Production Stage Manager*) is delighted to be back once again with TR for this charming production of *Bud, Not Buddy*. Some of her stage management credits include a production at Pure Life Theatre (*Loving*), Raleigh Little Theatre (*Bob Marley's Three Little Birds*), and The Justice Theatre Project (*A Soldier's Play*, *Porgy and Bess* and *Black Nativity*). She also has Assistant Stage Manager credits at The Justice Theatre Project (*The Color Purple*), and Theatre Raleigh (*The Scottsboro Boys*). LaNeisha is an entrepreneur and co-owner of What's Poppin' Gourmet Popcorn. She is grateful to her husband, Jamal, daughters



[www.headshotqueen.com](http://www.headshotqueen.com)  
**Headshots \$199**  
*Schedule your session today.*  
 Call, email or text Jennifer Robertson  
 919-971-9637    [jenrobpho@yahoo.com](mailto:jenrobpho@yahoo.com)

SPA • MED SPA • LASER CENTER • PLASTIC SURGERY

Trust **The Experts**  
 We're smart enough to support the arts

**Dr. Stewart Collins, MD**  
 Board-Certified Plastic Surgeon

AS SEEN ON  
**THE DOCTORS**

**Anna Churchill**  
 Founder of Synergy

United Arts Council  
 2018 Business Support of the Arts  
 Award Winner



**synergy**

FACE & BODY

TWO LOCATIONS IN RALEIGH: **INSIDE THE BELTLINE AND NORTH RALEIGH**

919.510.5130

[feelsynergy.com](http://feelsynergy.com)



Alexus, Janaya, and Jady, and her immediate family for their unwavering support. Much love to the cast and production team!

**GREGG GELB** (*Music Director*) is a saxophonist, clarinetist, band leader, arranger, composer and educator. He is director of the Triangle Youth Jazz Ensemble, founder and director of the Heart of Carolina Jazz Orchestra and Jazz Society, and co-founder and player with the North Carolina Jazz Repertory Orchestra. He has many jazz groups that he founded and performs with regularly; his Jazz Trio or Quartet, La Fiesta Latin Jazz Band, the Second Line Stompers, and Gregg Gelb Swing Band. He plays often with the North Carolina Symphony Orchestra. Besides always staying busy performing Gelb has always been a dedicated teacher who has constantly brought jazz and music education to people in NC since arriving here in 1979.

**MONÉT NOELLE MARSHALL** (*Director*) is an artist, director, playwright, curator, producer & cultural organizer. A 2018 Independent Weekly Arts Award winner, she serves as the Founding Artistic Director of MOJOAA Performing Arts Company. Recent projects include the "Buy It Call It" performance installations, which earned her the 2018 Mary B. Regan Community Artist Fellowship from the NC Arts Council. You can learn more about her upcoming work at MonetNoelleMarshall.com.

**ELIZABETH NEWTON** (*Scenic and Props Designer*) is excited to be working again with Theatre Raleigh. Elizabeth holds a BA in Theatre from Meredith College and an MFA in Scenic Design from the University of Southern Mississippi. While currently based in Raleigh, Elizabeth has worked as a designer and scenic artist in North Carolina,

Virginia, Oklahoma, Mississippi, and New York. In the Triangle, Elizabeth has collaborated with Raleigh Little Theatre, Burning Coal Theatre, Bare Theatre, NRACT, and Meredith College. She has also been the Scenic Designer for Regent University in Virginia Beach since 2017. Favorite recent design credits include *Pippin* (Raleigh Little Theatre), *Little Women* (Regent University), *Romeo and Juliet* (Regent University), *King Charles III* (Burning Coal), *Don't Dress For Dinner* (Raleigh Little Theatre), *Peter Pan and Wendy* (Burning Coal), *Oklahoma* (Regent), *The Seagull* (Regent), *Skylight* (Burning Coal), and *The Glass Menagerie* (Raleigh Little Theatre).

**KAITLIN GILL RIDER** (*Lighting Designer*) is a freelance lighting designer that holds a BFA in Theatrical Design and Production with a concentration in Lighting Design from the University of North Carolina at Greensboro. This is her second show designing with Theatre Raleigh and she is excited to return. Past show credits include, *Beehive: The 60's Musical* at Theatre Raleigh, *Gentleman's Guide to Love and Murder* at Raleigh Little Theatre, *Peter Pan* at Carolina Friends School, *Triangle* at North Carolina Theatre Conservatory, and *The Whipping Man* at Raleigh Little Theatre.

#### TRIANGLE YOUTH JAZZ ENSEMBLE

**Will Hazlehurst** – Bass

**Colin Waugh** – Drums

**Aiden McCoy** – Piano

**Emre Tekman** – Alto Sax

**Joe Foglia** – Tenor Sax/Clarinet

**Zeb Jewell-Alibhai** – Trumpet

# Kennedy Can!

Everything for your office since 1960



Kennedy Office proudly sponsors  
Theatre Raleigh!

Check us out at

[www.kennedyoffice.com](http://www.kennedyoffice.com)



Kennedy Office

3609 Bastion Lane | Raleigh, NC 27604

800.733.9401



# Electric Supply Co. of NC, Inc.



**Wilson**  
**1-252-237-0151**  
**Durham**  
**1-919-383-1571**  
**Greenville**  
**1-252-752-1325**  
**Jacksonville**  
**1-910-577-1800**  
**Goldsboro**  
**1-919-734-1144**  
**Youngsville**  
**1-919-554-8889**

**"1,000s of electrical goods for all your Industrial, Commercial and Residential needs!"**

*Serving Eastern NC for 69 years and counting. Thank you for your business!*

## ADDITIONAL PRODUCTION STAFF

**Janaya Farrar** – Assistant Stage Manager  
**Morgann Russell** – Audio Engineer  
**Gabriel Miller** – Costume Supervisor/  
 Dresser  
**Diego Lemus** – Spotlight Operator  
**Russ Owen** – Master Carpenter  
**Charlie Brady** – Videography  
**Wojcik | Seay Casting** – Casting (NYC)

## SPECIAL THANKS

Bill Yates Jr  
 Heather Owen  
 Leesa Brinkley  
 North Carolina Theatre  
 Reedy Creek Magnet Middle School  
 Regent University

## THEATRE RALEIGH BOARD OF DIRECTORS

Daniel Bryson, Chair  
 Alex Lehmann, Treasurer  
 Phyllis Demko  
 Richard Falvo  
 Kim Grissom  
 Deb Royals-Mizerk  
 Mike Wiley

## THEATRE RALEIGH STAFF

**Lauren Kennedy Brady** – Producing Artistic Director  
**Chris Bernier** – Technical Director/Production Manager  
**Ashley Allen** – Box Office Coordinator /Company Manager  
**Dena Maluchnik** – Development Director  
**Morgan Parpan** – Education Director  
**Michaeline Stith** – Marketing and Communications Director  
**Matthew Harvey** - Patron and Staff Relations Manager



## Spring Concerts

**April 26, 2 pm**  
 Triangle Youth Jazz Band and Orchestra  
 NC History Museum **free**

**May 10, 3 pm**  
 Triangle Youth Philharmonic  
 Meymandi Concert Hall  
 Rimsky Korsakov's Scheherazade  
**free for children**

**May 11, 7 pm**  
 Triangle Youth Orchestra and Symphony  
 Meymandi Concert Hall  
 Celebrating Beethoven's 250th  
**free for children**



 **Philharmonic Association  
 Triangle Youth Music**

Learn more at [Philharmonic-Association.org](http://Philharmonic-Association.org)

The Philharmonic Association is funded in part by the City of Raleigh based on recommendations of the Raleigh Arts Commission





Improving Health, Advancing Knowledge, and Inspiring Hope.

Proud Sponsor of Theatre Raleigh



**Duke** Raleigh Hospital

[dukeraleighhospital.org](http://dukeraleighhospital.org)



WHITFIELD BRYSON  
& MASON LLP  
ATTORNEYS AT LAW

is proud to be a sponsor  
of Theatre Raleigh

Raleigh, NC • Nashville, TN • Washington, D.C. • Madisonville, KY  
900 W. Morgan Street, Raleigh, NC 27603  
919.600.5000 | [WBMLLP.COM](http://WBMLLP.COM)

Member FDIC



The art of banking. Forever First.®

**Proud to support Theatre Raleigh.**

At First Citizens Bank, we believe the arts enrich lives and help us learn more about the world around us. That's why we're proud to support Theatre Raleigh, the best intimate, professional, live theatre in the Triangle. **First Citizens Bank. Forever First.**

[firstcitizens.com](http://firstcitizens.com)

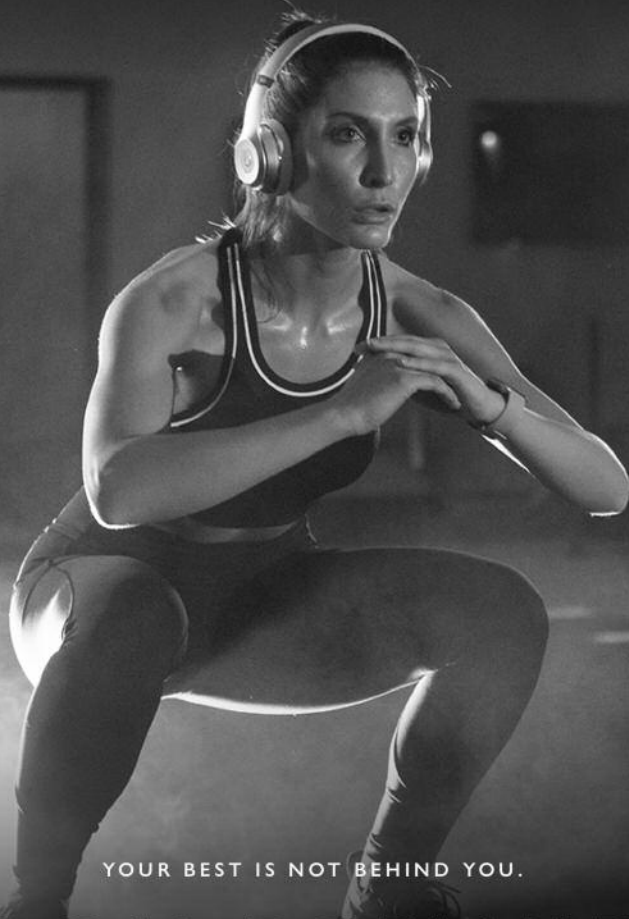




Over 25 locations throughout North & South Carolina



THE OFFICIAL FITNESS SPONSOR OF THEATRE RALEIGH



YOUR BEST IS NOT BEHIND YOU.

LOOK FORWARD

SIGN UP FOR YOUR FREE TRIAL TODAY

[o2fitnessclubs.com](http://o2fitnessclubs.com)



Inspire.  
In a word,  
we believe in the  
transformative  
power of the arts.

Perhaps the most meaningful thing you can do with success is share it. And when you do that with care and conviction, giving can be an art form – one Raymond James has been practicing since 1962. Today, we carry on the charitable legacy of our founder Bob James in words and actions as we seek to go forward by giving back. **LIFE WELL PLANNED.**

**John Fox Matthews**  
*Managing Director*

J. Tyler Matthews  
Financial Advisor  
3515 Glenwood Ave, Ste 200  
Raleigh, NC 27612/919-784-8310

**RAYMOND JAMES**

PROUD TO SUPPORT  
THEATRE RALEIGH

© 2017 Raymond James & Associates, Inc., member New York Stock Exchange/SIPC.  
Raymond James is not affiliated with the organization listed.

# THANK YOU TO OUR THEATRE RALEIGH DONORS

*Gifts received since August 1, 2019*

## Backer

\$10,000 and above

Anthony Dilweg  
Sara Lynn and  
K.D. Kennedy

## Producer

\$5,000 - \$9,999

Lynda and Dan Bryson  
Donna and Richard Falvo  
Debbie and Mark  
Hammersla  
Michael Kennedy

## Playwright

\$1,500-\$2,499

Jane Pinsky and  
Richard Adelman  
Chris Bernier  
Kenneth Branch  
Janet Christenson  
Mary Lynn Moody  
Jennifer Pittman

## Director

\$1000 - \$1,499

Jane Pinsky and  
Richard Adelman  
Linda and Thomas Birk  
Rose M Bulger  
Debbie and Tom Coffman  
Kim and Doug Grissom  
Douglas Kahn  
Anne and Rick Meadows  
Mary Lynn Moody  
Marie and James Parina  
Francine and Ralph  
Roberson  
Dorothy and Thomas  
Russell  
Linda Day and Michael  
Sheaffer  
Connie and Robert Shertz  
Scott Tease  
Garnett Whitehurst

## V.I.P.

\$500 - \$999

Robin and Kevin Angley  
Susan and Tony Barrella  
Kathy and David Bartlett  
Ann and Robert Borden  
Kenneth Branch  
Mary Bright  
Janet Christenson  
Lowell Davidson  
Linda and Alex De Grand  
Phyllis and Marty Demko  
Paige and Don Dixon  
AC Donohue  
Ronald Ellis, Jr.  
Pat and Paul Elstro  
Karen and Joe Gdaniec  
Teresa Grimes  
Carole Guld  
Sandra and Howard  
Kaufman  
Ruth Gross and Hans  
Kellner  
Deb Royals-Mizerk  
Michelle Opitz  
Laura and Mitch Perry  
Michelle Putterman  
Caroline Taylor  
Nadine and Fay Tolman  
Paisley and Mike Wessel

## Friend

\$100 - \$499

Judith and David Adamson  
Sandra Berman  
Peter Bleckner  
Sharon Boyle-Woods  
Barara Calhoun  
Phil Crone  
Jacobi Daley  
Elizabeth Droessler  
Gregory Egan  
Karen Garr  
Jane Gonzalez-Perez  
Angela Grant  
Jeanne and John Grover  
Al King  
Kathy Morgan  
Robert Palmer  
Julie Paul  
Yolanda Rabun  
Jenifer Reynolds  
Phyllis Rideout  
Mette Schladweiler  
Nicole Smedley  
Chad Steen  
Christy Story  
Elaine Taylor  
Roy Teel  
Wendy Temple  
Lisa Wallace  
Kathryn Welch  
Jeffery West  
Mike Wiley  
Marlene Wilson  
John Zarembo

announcing  
THEATRE RALEIGH 2020 SUMMER SERIES

Get Your 2020 Season Subscription!  
919.832.9997 • TheatreRaleigh.com

*Thank you  
to our  
sponsors  
for the  
Summer  
Series!*

**\$20,000+**

The Dilweg  
Companies

Sara Lynn and  
K.D. Kennedy, Jr.

Summit Hospitality  
Group, Ltd.

**\$10,000 - \$14,999**

First Citizens Bank  
Synergy Spa Face  
and Body

**\$5,000 - \$9,999**

CaptiveAire  
Duke Raleigh  
Hospital  
O2 Fitness  
Weston Banks  
Wealth Partners

**\$2500-\$4999**

Raymond James  
& Associates

## READY TO GET A LITTLE CREEPY?

Join us for a summer of singing, dancing and lots of fun at Theatre Raleigh's musical theatre camps!



The  
Addams  
Family  
Young @ Part®

**TWO-WEEK CAMP**

June 15-26

Performances June 26 & 27  
Ages 11-17

**ONE-WEEK CAMP**

July 6-10

Performances July 10  
Ages 6-10

TR THEATRE RALEIGH  
EDUCATION